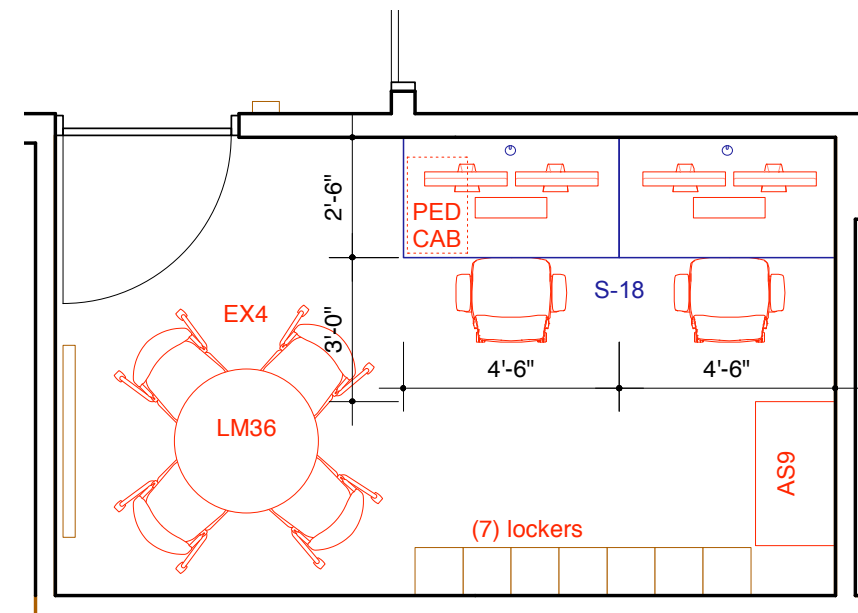
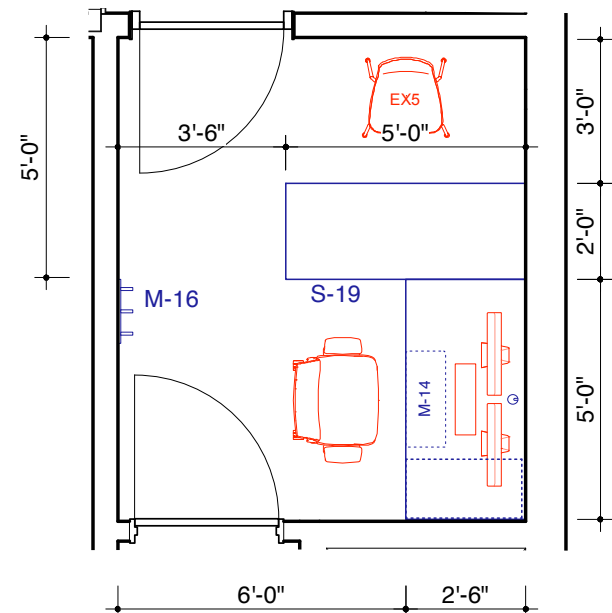


1 GROUND FLOOR KEY PLAN
1/16" = 1'-0"



2 FURNITURE ENLARGED PLAN: 102 SAFETY OFFICE
1/4" = 1'-0"



3 FURNITURE ENLARGED PLAN: 152 SAFETY OFFICE
1/4" = 1'-0"

REVISIONS:	
ISSUE	DATE
ISSUED FOR PRICING	02.08.2022
SCHEMATIC DESIGN	11.18.2022
90% DESIGN DEVELOPMENT	02.01.2023
100% DESIGN DEVELOPMENT	04.10.2023
50% CONSTRUCTION DOCUMENTS	05.08.2023
BID SET	06.05.2023
ISSUED FOR FFE BID	10.19.2023

LEGEND	
EXISTING FURNITURE, BY OWNER	
NEW FURNITURE	

PROJECT:
SKOKIE PUBLIC LIBRARY 3rd FLOOR
5215 OAKTON STREET
SKOKIE, IL 60077

ARCHITECT:
ANDREW BERMAN ARCHITECT PLLC
77 CHAMBERS STREET
NEW YORK, NY 10007
P 212 226 5998

MEP ENGINEER:
SALAS O'BRIEN
815 SOUTH WABASH AVENUE
CHICAGO, ILLINOIS 60605
P 312 786 4310

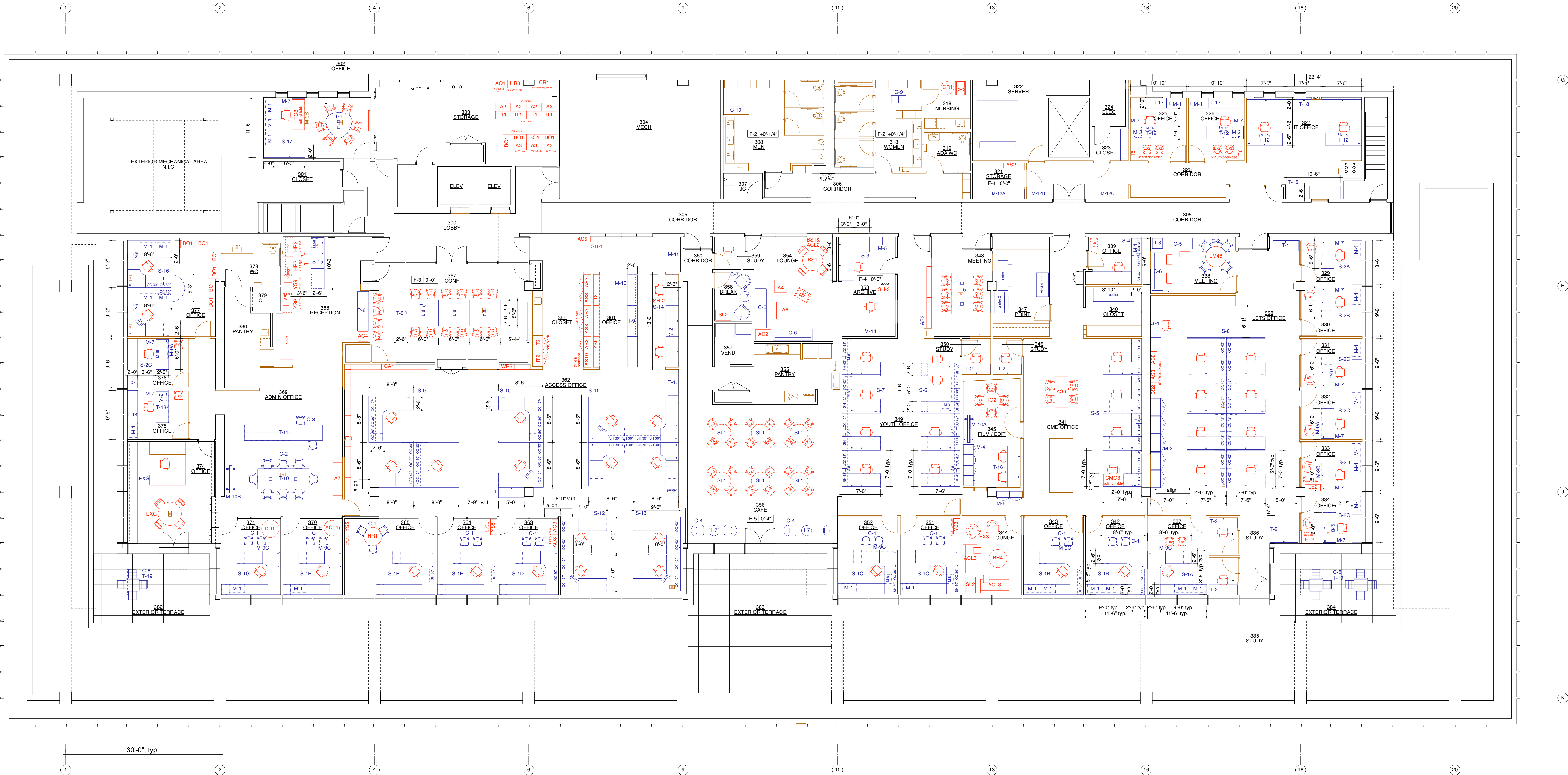
LIGHTING DESIGNER:
SCHULER SHOOK
363 WEST ERIE, SUITE 400
CHICAGO, ILLINOIS 60604
P 312 944 8230

ACOUSTICAL CONSULTANT:
THRESHOLD ACOUSTICS LLC
141 WEST JACKSON BLVD, SUITE 2080
CHICAGO, ILLINOIS 60604
P 312 366 1400

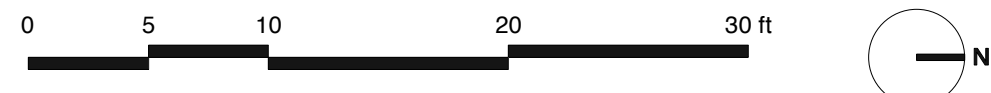
SHEET TITLE:
**FURNITURE PLAN:
GROUND FLOOR**

SCALE: AS NOTED DATE: 06.05.2023
DRAWN: HY CHECKED: AB, AM
SEAL: SHEET NO.:

I-100.00



FURNITURE PLAN: THIRD FLOOR
1/8" = 1'-0"



REVISIONS:	
ISSUE	DATE
ISSUED FOR PRICING	02.08.2022
SCHEMATIC DESIGN	11.10.2022
90% DESIGN DEVELOPMENT	02.01.2023
100% DESIGN DEVELOPMENT	04.10.2023
50% CONSTRUCTION DOCUMENTS	05.08.2023
BID SET	06.05.2023
ISSUED FOR CONSTRUCTION	08.11.2023
ISSUED FOR RFE BID	10.19.2023

LEGEND	
	NEW FRAMED WALL, PTD GWB
	EXISTING WALL TO REMAIN, PTD
	EXISTING FURNITURE, BY OWNER
	NEW FURNITURE
	FLOOR BOX

FLOOR TYPE SYMBOL	
F-#	FLOOR TYPE SYMBOL
ALL FLOORING WITH FURNITURE WILL BE CARPET, UNLESS OTHERWISE NOTED WITH F-# SYMBOL.	
FLOOR TYPES:	
F-2:	ceramic tile
F-3:	existing wood
F-4:	VCT
F-5:	linoleum tile

- NOTES:
1. REFER TO I-500 FURNITURE ELEVATIONS AND SECTIONS FOR DETAILS FOR STAFF WORK DESKS S-1 TO S-17, T-9 AND T-11.
 2. REFER TO E-100 ELECTRICAL POWER PLAN AND T-101 TECHNOLOGY PLAN FOR POWER AND DATA INFORMATION.
 3. ALL FLOORING WILL BE CARPET TILES, EXCEPT BATHROOMS WHICH WILL HAVE CERAMIC FLOOR TILES.

PROJECT:
SKOKIE PUBLIC LIBRARY 3rd FLOOR
5215 OAKTON STREET
SKOKIE, IL 60077

ARCHITECT:
ANDREW BERMAN ARCHITECT PLLC
77 CHAMBERS STREET
NEW YORK, NY 10007
P 212 226 5998

MEP ENGINEER:
SALAS O'BRIEN
815 SOUTH WABASH AVENUE
CHICAGO, ILLINOIS 60605
P 312 786 4310

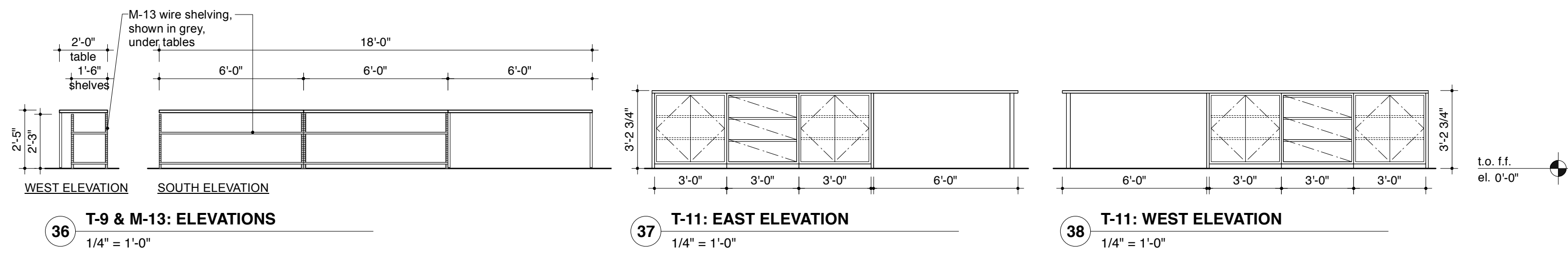
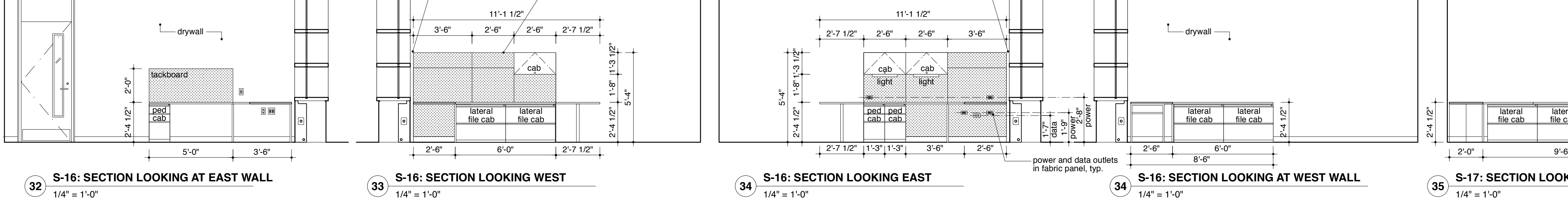
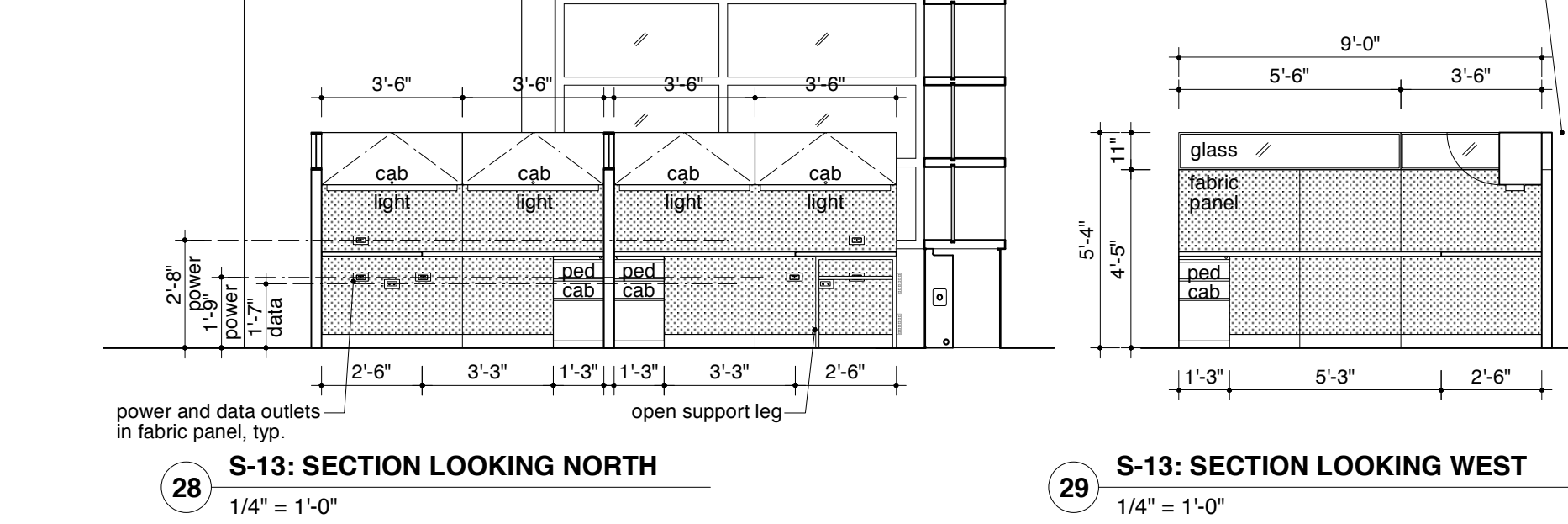
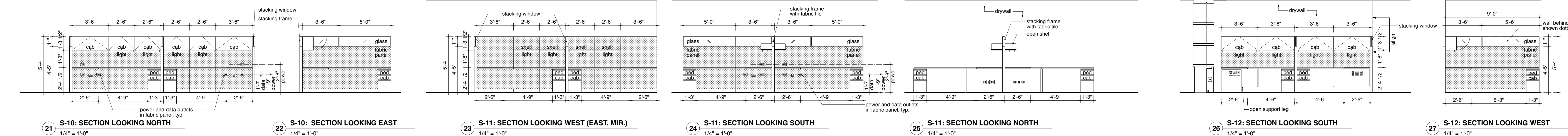
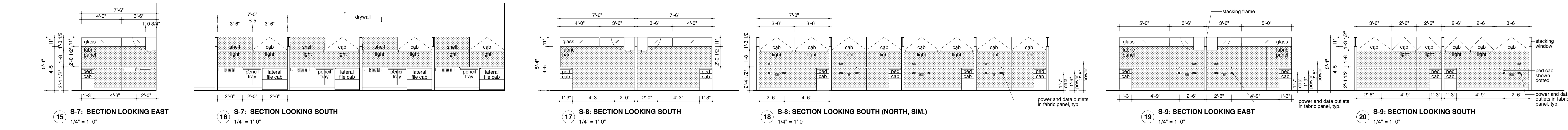
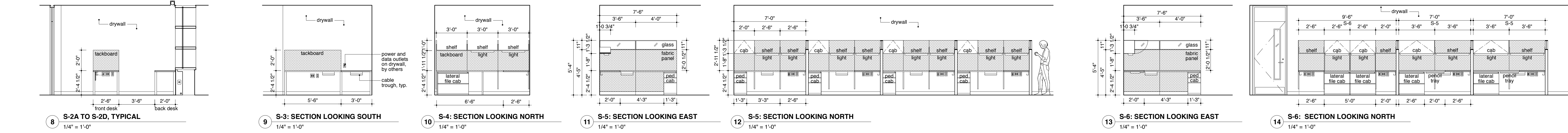
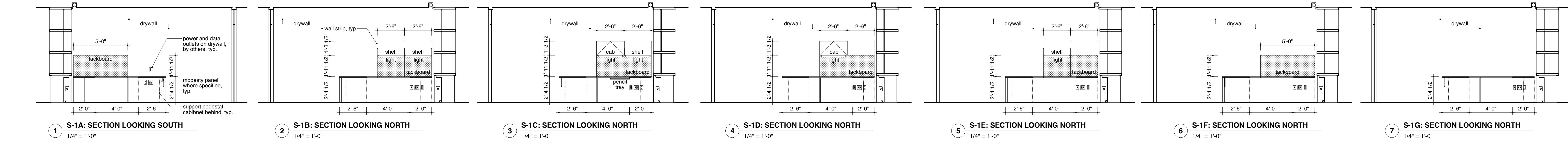
LIGHTING DESIGNER:
SCHULER SHOOK
383 WEST ERIE, SUITE 400
CHICAGO, ILLINOIS 60604
P 312 944 8230

ACOUSTICAL CONSULTANT:
THRESHOLD ACOUSTICS LLC
141 WEST JACKSON BLVD, SUITE 2080
CHICAGO, ILLINOIS 60604
P 312 366 1400

SHEET TITLE:
**FURNITURE PLAN
THIRD FLOOR**

SCALE: 1/8" = 1'-0" DATE: 08.11.2023
DRAWN: HY CHECKED: AB, AM
SEAL: SHEET NO.:

I-110.00



b.o. clg
el. 8'-9"

l.o. ff.
el. 0'-0"

b.o. clg
el. 8'-9"

l.o. ff.
el. 0'-0"

b.o. clg
el. 8'-9"

l.o. ff.
el. 0'-0"

b.o. clg
el. 8'-9"

l.o. ff.
el. 0'-0"

b.o. clg
el. 8'-9"

l.o. ff.
el. 0'-0"

b.o. clg
el. 8'-9"

l.o. ff.
el. 0'-0"

REVISIONS:

ISSUE: DATE

ISSUE FOR FFE BID: 10.19.2023

LEGEND

FABRIC

PROJECT:

SKOKIE PUBLIC LIBRARY 3rd FLOOR

5215 OAKTON STREET

SKOKIE, IL 60077

ARCHITECT:

ANDREW BERMAN ARCHITECT PLLC

77 CHAMBERS STREET

NEW YORK, NY 10007

P 212 226 5998

F 312 944 8230

MEP ENGINEER:

SALAS O'BRIEN

815 SOUTH WABASH AVENUE

CHICAGO, ILLINOIS 60605

P 312 786 4310

LIGHTING DESIGNER:

SCHULER SHOOK

363 WEST ERIE, SUITE 400

CHICAGO, ILLINOIS 60604

P 312 944 8230

ACOUSTICAL CONSULTANT:

THRESHOLD ACOUSTICS LLC

141 WEST JACKSON BLVD, SUITE 2080

CHICAGO, ILLINOIS 60604

P 312 386 1400

SHEET TITLE:

FURNITURE ELEVATIONS AND SECTIONS

SCALE: 1/4" = 1'-0" DATE: 10.11.2023

DRAWN: VS CHECKED:

SEAL: SHEET NO.:

I-500.00

COPYRIGHT © ANDREW BERMAN ARCHITECT PLLC

GENERAL ELECTRICAL SYMBOLS			POWER DEVICE SYMBOLS			POWER EQUIPMENT SYMBOLS			LIGHTING SYMBOLS			SECURITY SYMBOLS			MOUNTING HEIGHTS		
	CONDUIT RUN CONCEALED IN CEILING OR WALL	ARROWHEAD DENOTES HOMERUN TO PANELBOARD. SLASH LINES INDICATE QUANTITY OF WIRE. NEUTRAL WIRE SHOWN AS A LONG LINE. PHASE WIRES AND SWITCH LEADS SHOWN AS SHORT LINES, AND GROUND WIRE SHOWN AS A LONG LINE WITH A DOT.		WALL FLOOR POKE-BOX THROUGH		DUPLEX RECEPTACLE		SURFACE MOUNTED DISTRIBUTION PANELBOARD		2' X 4' LIGHTING FIXTURE.	LIGHTING FIXTURES: "F1" INDICATES LIGHTING FIXTURE TYPE. REFER TO LIGHTING FIXTURE SCHEDULE FOR DESCRIPTION AND MOUNTING. "1" INDICATES CIRCUIT NUMBER "a" INDICATES SWITCH CONTROL. SHADING OF LIGHTING FIXTURE OR "E" INDICATES LIGHTING FIXTURE CONNECTED TO EMERGENCY CIRCUIT.		PUSH-BUTTON STATION	MOUNTING HEIGHTS OF ELECTRICAL ITEMS SHALL BE AS LISTED BELOW ABOVE FINISHED FLOOR TO CENTERLINE, UNLESS NOTED OTHERWISE: A. FIRE ALARM VISUAL DEVICES 80" B. FIRE ALARM AUDIO VISUAL DEVICES 80" C. INDIVIDUAL DISCONNECTS AND STARTERS 60" D. GROUPED DISCONNECTS AND STARTERS > 12" E. PANELBOARD OVERCURRENT DEVICES > 12" F. GROUPED UTILITY REVENUE METERS > 72" G. FIRE ALARM PULL STATIONS 48"			
	CONDUIT RUN CONCEALED IN OR BELOW FLOOR			DUPLEX RECEPTACLE		SURFACE MOUNTED BRANCH CIRCUIT PANELBOARD		2' X 2' LIGHTING FIXTURE.		"DB" DOORBELL "DR" DOOR RELEASE							
	CONDUIT RUN EXPOSED ON CEILING OR WALL			DOUBLE DUPLEX RECEPTACLE		RECESSED MOUNTED BRANCH CIRCUIT PANELBOARD		1' X 4' LIGHTING FIXTURE.		BUZZER							
	CONDUIT, WHERE "X" IS THE TYPE OR FUNCTION OF CONDUIT.		DUPLEX RECEPTACLE – SPLIT WIRED		SWITCHBOARDS, DISTRIBUTION PANELBOARDS, MOTOR CONTROL CENTERS, PANELBOARDS, CABINETS, AND RELATED EQUIPMENT		LINEAR LIGHTING FIXTURE – LENGTH AS INDICATED.		BELL								
	CONDUIT STUBBED UP		COMBINATION DUPLEX RECEPTACLE TELEPHONE/ DATA SYSTEMS OUTLET		INCANDESCENT, HID, OR LED LIGHTING FIXTURE		LOW VOLTAGE TRANSFORMER WITHIN PLENUM BOX		CHIME								
	CONDUIT STUBBED DOWN		COMBINATION DOUBLE DUPLEX RECEPTACLE TELEPHONE/ DATA SYSTEMS OUTLET		2' X 4' LIGHTING FIXTURE CONNECTED TO EMERGENCY CIRCUIT.		CLOSED CIRCUIT TELEVISION CAMERA		CARD READER	COMMUNICATIONS SYMBOLS							
	FLEXIBLE CONDUIT		SPECIAL RECEPTACLE – NEMA TYPE AS INDICATED		LINEAR LIGHTING FIXTURE CONNECTED TO EMERGENCY CIRCUIT.		DOOR CONTACT		MOTION SENSOR								
	CONDUIT TERMINATION:		JUNCTION BOX WITH FLEXIBLE CONDUIT AND FINAL EQUIPMENT OR FURNITURE SYSTEM POWER CONNECTION		BATTERY PACK, EMERGENCY LIGHTING UNIT		TELEPHONE TERMINAL CABINET										
	CONDUIT SEAL		MAGNETIC MOTOR STARTER – NEMA SIZE AS INDICATED		REMOTE HEAD CONNECTED TO BATTERY PACK.												
	MULTI-OUTLET ASSEMBLY		COMBINATION MOTOR STARTER AND NON-FUSED DISCONNECT, "AS" INDICATES AMPERE RATING OF SWITCH		TRACK LIGHTING												
	WIREWAY		NON-FUSED DISCONNECT SWITCH, "AS" INDICATES AMPERE RATING OF SWITCH		"#X" INDICATES INSCRIPTION, ARROWS, AND SINGLE OR DOUBLE FACED, AS SHOWN BELOW. SHADED QUADRANTS INDICATES DIRECTION OF LIGHTED FACES.		WALL FLOOR POKE-BOX THROUGH		SUBSCRIPT INDICATES THE FOLLOWING FOR BELOW WALL MOUNTED OUTLETS, (U.N.O.): "H" HANDICAP MOUNTED AT 48" A.F.F. "P" PAY PHONE MOUNTED AT 54" A.F.F. "W" WALL MOUNTED AT 54" A.F.F.								
	CABLE TRAY		FUSED DISCONNECT SWITCH, "AS" INDICATES AMPERE RATING OF SWITCH AND "AF" INDICATES AMPERE RATING OF FUSE		TRIANGLE		TELEPHONE OUTLET		DUPLEX TELEPHONE OUTLET								
	BUSWAY (BUSDUCT)		MAGNETIC MOTOR STARTER – NEMA SIZE AS INDICATED		EXIT		DUPLEX DATA SYSTEMS OUTLET		COMBINATION TELEPHONE/ DATA SYSTEMS OUTLET								
	UNDERFLOOR DUCT SYSTEM: — INDICATES POWER DUCT --- INDICATES TELEPHONE DUCT ---- INDICATES SYSTEM DUCT		COMBINATION MOTOR STARTER AND NON-FUSED DISCONNECT, "AS" INDICATES AMPERE RATING OF SWITCH		STAIRS		JUNCTION BOX WITH FLEXIBLE CONDUIT AND FINAL EQUIPMENT OR FURNITURE SYSTEM CONNECTION. SUBSCRIPTS INDICATE THE FOLLOWING:		JUNCTION BOX WITH FLEXIBLE CONDUIT AND FINAL EQUIPMENT OR FURNITURE SYSTEM CONNECTION. SUBSCRIPTS INDICATE THE FOLLOWING:								
	VARIOUS SYMBOLS IDENTIFY LOCATION OF DIFFERENT TYPES OF OUTLETS OR CONNECTIONS TO UNDERFLOOR DUCT SYSTEM.		SHUNT TRIP		SURGE PROTECTION DEVICE		JUNCTION BOX WITH FLEXIBLE CONDUIT AND FINAL EQUIPMENT OR FURNITURE SYSTEM CONNECTION. SUBSCRIPTS INDICATE THE FOLLOWING:		JUNCTION BOX WITH FLEXIBLE CONDUIT AND FINAL EQUIPMENT OR FURNITURE SYSTEM CONNECTION. SUBSCRIPTS INDICATE THE FOLLOWING:								
	PULL BOX		CUSTOMER METER		EMERGENCY POWER OFF MUSHROOM PUSHBUTTON CONTROL STATION		JUNCTION BOX WITH FLEXIBLE CONDUIT AND FINAL EQUIPMENT OR FURNITURE SYSTEM CONNECTION. SUBSCRIPTS INDICATE THE FOLLOWING:		JUNCTION BOX WITH FLEXIBLE CONDUIT AND FINAL EQUIPMENT OR FURNITURE SYSTEM CONNECTION. SUBSCRIPTS INDICATE THE FOLLOWING:								
	JUNCTION BOX – EXPOSED OR IN CEILING		LIGHT SWITCH, SINGLE POLE UNLESS NOTED OTHERWISE:		JUNCTION BOX WITH FLEXIBLE CONDUIT AND FINAL EQUIPMENT OR FURNITURE SYSTEM CONNECTION. SUBSCRIPTS INDICATE THE FOLLOWING:		JUNCTION BOX WITH FLEXIBLE CONDUIT AND FINAL EQUIPMENT OR FURNITURE SYSTEM CONNECTION. SUBSCRIPTS INDICATE THE FOLLOWING:		JUNCTION BOX WITH FLEXIBLE CONDUIT AND FINAL EQUIPMENT OR FURNITURE SYSTEM CONNECTION. SUBSCRIPTS INDICATE THE FOLLOWING:								
	JUNCTION BOX – WALL MOUNTED		INDICATES LIGHTS CONTROLLED		INDICATES DIMMER SWITCH		INDICATES CIRCUIT NUMBER		INDICATES TELEPHONE								
	JUNCTION BOX FOR HAND DRYER CONNECTION – WALL MOUNTED		INDICATES WEATHERPROOF		INDICATES 2 POLE		INDICATES THREE POLE		INDICATES DATA SYSTEMS								
	JUNCTION BOX WITH FLEXIBLE CONDUIT AND FINAL CONNECTION TO EQUIPMENT.		INDICATES MONETARY CONTACT		INDICATES THREE-WAY		INDICATES FOUR-WAY		INDICATES THIN WALL CONDUIT								
	EQUIPMENT IDENTIFICATION TAG		INDICATES PILOT LIGHT		INDICATES THERMAL OVERLOAD PROTECTION		INDICATES SWITCHBOARD		INDICATES SYMMETRICAL								
			INDICATES TERMINAL CABINET		INDICATES SYSTEM		INDICATES TERMINAL CABINET		INDICATES SYSTEM								
			INDICATES TELEPHONE UNIT HEATER		INDICATES EXPLOSION PROOF		INDICATES FAN POWERED BOX		INDICATES FIRE DEPARTMENT CONNECTION								
			INDICATES FAN POWERED BOX		INDICATES FIRE ALARM		INDICATES FIRE DEPARTMENT CONNECTION		INDICATES TERMINAL CABINET								
			INDICATES FLOOR BOX		INDICATES FLOOR BOX		INDICATES FLOOR BOX		INDICATES FLOOR BOX								
			INDICATES FLUORESCENT		INDICATES FLUORESCENT		INDICATES FLUORESCENT		INDICATES FLUORESCENT								
			INDICATES FLEXIBLE METALLIC CONDUIT		INDICATES FLEXIBLE METALLIC CONDUIT		INDICATES FLEXIBLE METALLIC CONDUIT		INDICATES FLEXIBLE METALLIC CONDUIT								
			INDICATES FUSE		INDICATES FUSE		INDICATES FUSE		INDICATES FUSE								
			INDICATES FUSED SWITCH		INDICATES FUSED SWITCH		INDICATES FUSED SWITCH		INDICATES FUSED SWITCH								
			INDICATES GENERATOR		INDICATES GENERATOR		INDICATES GENERATOR		INDICATES GENERATOR								
			INDICATES GROUND		INDICATES GROUND		INDICATES GROUND		INDICATES GROUND								
			INDICATES GROUND FAULT INTERRUPTER		INDICATES GROUND FAULT INTERRUPTER		INDICATES GROUND FAULT INTERRUPTER		INDICATES GROUND FAULT INTERRUPTER								
			INDICATES GALVANIZED HEAVYWALL STEEL CONDUIT		INDICATES GALVANIZED HEAVYWALL STEEL CONDUIT		INDICATES GALVANIZED HEAVYWALL STEEL CONDUIT		INDICATES GALVANIZED HEAVYWALL STEEL CONDUIT								
			INDICATES HIGH VOLTAGE		INDICATES HIGH VOLTAGE		INDICATES HIGH VOLTAGE		INDICATES HIGH VOLTAGE								
			INDICATES HORSE POWER		INDICATES HORSE POWER		INDICATES HORSE POWER		INDICATES HORSE POWER								
			INDICATES INCANDESCENT		INDICATES INCANDESCENT		INDICATES INCANDESCENT		INDICATES INCANDESCENT								
			INDICATES INTERRUPTING CAPACITY		INDICATES INTERRUPTING CAPACITY		INDICATES INTERRUPTING CAPACITY		INDICATES INTERRUPTING CAPACITY								
			INDICATES INTERMEDIATE GRADE CONDUIT		INDICATES INTERMEDIATE GRADE CONDUIT		INDICATES INTERMEDIATE GRADE CONDUIT		INDICATES INTERMEDIATE GRADE CONDUIT								
			INDICATES JUNCTION BOX		INDICATES JUNCTION BOX		INDICATES JUNCTION BOX		INDICATES JUNCTION BOX								
			INDICATES KILOWATT		INDICATES KILOWATT		INDICATES KILOWATT		INDICATES KILOWATT								
			INDICATES KILOWATT-HOUR		INDICATES KILOWATT-HOUR		INDICATES KILOWATT-HOUR		INDICATES KILOWATT-HOUR								

1ELECTRICAL SYMBOL LIST

N.T.S.

REVISIONS:	
ISSUE	DATE
50% DESIGN DEVELOPMENT	02.01.2023
100% DESIGN DEVELOPMENT	04.10.2023
50% CONSTRUCTION DOCUMENTS	05.08.2023
BID SET	06.05.2023
ISSUE FOR CONSTRUCTION	08.11.2023
ISSUE FOR FFE BID	10.19.2023

PROJECT:
SKOKIE PUBLIC LIBRARY 3rd FLOOR
5215 OAKTON STREET
SKOKIE, IL 60077

ARCHITECT:
ANDREW BERMAN ARCHITECT PLLC
77 CHAMBERS STREET
NEW YORK, NY 10007
P 212 226 5998

MEP ENGINEER:
SALAS O'BRIEN
815 SOUTH WABASH AVENUE
CHICAGO, ILLINOIS 60605
P 312 786 4310

LIGHTING DESIGNER:
SCHULER SHOOK
363 WEST ERIE, SUITE 400
CHICAGO, ILLINOIS 60604
P 312 944 8230

ACOUSTICAL CONSULTANT:
THRESHOLD ACOUSTICS LLC
141 WEST JACKSON BLVD, SUITE 2080
CHICAGO, ILLINOIS 60604
P 312 386 1400

SHEET TITLE:
ELECTRICAL SYMBOL LIST

SCALE:	DATE:
DRAWN:	CHECKED:
SEAL:	SHEET NO.:
	E-001
	1
	1



ELECTRICAL POWER AND SIGNAL PLAN

- NOTES:
- REFER TO FRONT SHEETS FOR SYMBOL LIST, GENERAL NOTES, AND BRANCH CIRCUIT WIRING NOTES.
 - CONNECT 120/208V WIRING DEVICES TO EXISTING PANELS INDICATED BY ELECTRICAL PANEL DIVISION LINES, UNO.
 - REFERENCE ARCHITECT FOR WIRING DEVICE MOUNTING HEIGHTS AND LOCATION.
 - PROVIDE SCANNING OF FLOOR FOR POKE-THRU DEVICE LOCATIONS.
 - ALL NEW CIRCUITING SHOWN ON THIS DRAWING IS FOR DESIGN INTENT ONLY AND MAY NOT REPRESENT FIELD CONDITIONS. VERIFY FIELD CONDITIONS PRIOR TO CIRCUITING. USE SPARE BREAKERS AND BREAKERS MADE AVAILABLE AFTER DEMOLITION WHERE POSSIBLE. PROVIDE NEW WIRING AND CONDUIT AS REQUIRED.
 - COORDINATE WITH SKOKIE PUBLIC LIBRARY IT FOR ADDITIONAL ELECTRICAL REQUIREMENTS.
 - PROVIDE ISOLATED GROUND CONDUCTOR FOR CIRCUITS CONNECTED TO 'CS' PANELS. (CIRCUIT NUMBER IN PARENTHESIS) CIRCUITS WITH 'CS' SHALL GO TO CS PANELS.
 - CONTRACTOR TO REUSE EXISTING RECEPTACLES WHERE DENOTED 'EX'. CONTRACTOR SHALL CONDUCT A SITE SURVEY TO DETERMINE EXACT LOCATIONS PRIOR TO BID. AT LOCATIONS WHERE NEW POWER IS NEEDED, BUT EXISTING INFRASTRUCTURE DOES NOT EXIST, CONTRACTOR SHALL PULL NEW WIRE ALONG WITH ANY NECESSARY INFRASTRUCTURE.

- KEY NOTES:
- SPECIAL RESILIENT ACOUSTICAL DETAILS REQUIRED FOR ALL DEVICES INSIDE 345 FILM/EDIT. REFER TO DETAIL 2 ON E-003.

REFER TO ARCHITECTURAL INTERIOR ELEVATIONS FOR EXACT LOCATIONS OF ALL DEVICES. IN CASE OF DISCREPANCY, NOTIFY ARCHITECT PRIOR TO INSTALLATION. DEVICES INSTALLED IN LOCATIONS CONTRARY TO ARCHITECTURAL ELEVATIONS SHALL BE REINSTALLED AT NO ADDITIONAL COST TO THE OWNER.

REVISIONS:	
ISSUE	DATE
50% DESIGN DEVELOPMENT	02.01.2023
100% DESIGN DEVELOPMENT	04.10.2023
50% CONSTRUCTION DOCUMENTS	05.08.2023
BID SET	06.05.2023
APPENDIX 1	07.11.2023
ISSUE FOR CONSTRUCTION	08.11.2023
ISSUE FOR FFE BID	10.19.2023

PROJECT:
SKOKIE PUBLIC LIBRARY 3rd FLOOR
5215 OAKTON STREET
SKOKIE, IL 60077

ARCHITECT:
ANDREW BERMAN ARCHITECT PLLC
77 CHAMBERS STREET
NEW YORK, NY 10007
P 212 226 5998

MEP ENGINEER:
SALAS O'BRIEN
815 SOUTH WABASH AVENUE
CHICAGO, ILLINOIS 60605
P 312 786 4310

LIGHTING DESIGNER:
SCHULER SHOOK
363 WEST ERIE, SUITE 400
CHICAGO, ILLINOIS 60604
P 312 944 8230

ACOUSTICAL CONSULTANT:
THRESHOLD ACOUSTICS LLC
141 WEST JACKSON BLVD, SUITE 2080
CHICAGO, ILLINOIS 60604
P 312 386 1400

SHEET TITLE:
ELECTRICAL POWER AND
SIGNAL PLAN

SCALE:	DATE:
DRAWN:	CHECKED:
SEAL:	SHEET NO.:
	E-100
	1



SKOKIE PUBLIC LIBRARY
3RD FLOOR TECHNOLOGY SET

AUDIO-VISUAL FUNCTION SUMMARIES
& EQUIPMENT LISTS

AV REQUIREMENTS

Final Design	
1. The AV installer is required to complete the final design based upon the intent and major components listed herein.	
2. All work proposed from these documented shall be complete and fully functional systems.	
Displays & Project Devices:	
1. All displays shall be provided commercially rated or with an extended warranty to be used in a commercial environment.	
2. All displays shall be rated for use 16-hours per day, 7-days per week unless noted otherwise.	
3. Final field coordination of flat panels, projectors, screens, touch panels, or other display technology shall be completed by the AV installer.	
Control systems and user interface	
6. Final user interface shall be verified with the client during the submittal phase for all touch panels, button controllers, and other control elements.	
7. The user interface must meet the functionality described in the summary and conform to any known client standards.	
8. Maps must be provided on the control interface to provide visual indication of input and output locations.	
9. Custom user interfaces shall follow AVIXA documented best practices and created to be user friendly with minimal training.	
Input location cords	
1. End user input location cords will not be listed in the equipment list unless it is fixed within a device (cubby, etc).	
2. The installer shall provide a user connection cable for each input location and each input connection type.	
Signal transmission	
1. All cabling required for the system shall be provided by the AV installer unless noted otherwise.	
2. Any network data locations identified to be provided by the Communications installer shall be excluded from the AV installer's scope of work.	
3. All cabling shall be certified for the intended purpose and fall within the guidelines of the manufacturer of both ends of equipment.	
4. All digital transport encoders, decoders, baluns, or other required active components shall be provided by the AV installer within the base scope of work.	
5. All AV and signal transmission exceeding 15-feet shall be converted to a digital UTP cabling system.	
Signal Processing	
1. All display native resolutions shall be identified for the client and input shall be scaled to that resolution.	
2. The following requirements shall be set a baseline standard for all display devices or separate processing components that may not be listed in the equipment list.	
Up/Down Scaling: Horizontal, Vertical, and Diagonal averaging	
De-Interlacing: Motion Adaptive	
Color Depth: 10-bits	
Chroma Sampling: 4:4:4	
Be-Sync: Automatic	
Audio	
1. For all spaces controlled by digital signal processors, the AV installer must provide full programming, tuning, balancing, and commissioning.	
2. Analog, IP, or USB interface shall be confirmed prior to ordering any equipment.	
3. Automatic gain shall be configured and a maximum of 6dB noise cancellation used.	
4. Microphone muting requirements shall be presented to the client prior to programming for acceptance of standard operating procedures.	

CONFERENCE ROOM 367

Function Summary		
Use Case	Local Presentation and Video Conferencing	
Display	Existing 90" display on wall	
Input	Existing Mersive Solstice Pod, Existing OFE PC	
Audio	Existing Overhead Microphones, New Ceiling Speakers	
Control	Mfr Remote Control	
Special	AV Rack Moved to New Closet	
Equipment Summary		
Manufacturer	Model	Description
SHARP	OFE (EXISTING)	90" FLAT PANEL DISPLAY
EXISTING	OFE	WALL MOUNT
EXISTING	OFE MERSIVE	WIRELESS PRESENTATION DEVICE
EXISTING	OFE COMPUTER	COMPUTER IN RACK (WIRELESS KEYBOARD KIT)
QSC	SPA2-60	70V AMPLIFIER
QSC	AD-C6T-4LP	70V CEILING SPEAKER (QTY PER PLANS)
EXISTING	30 QMINI	EXISTING OFE PTZ CAMERA WITH USB EXTENSION
EXISTING	EASYUSB MIXER/AMP	EXISTING OFE USB AUDIO BRIDGE
EXISTING	CEILING MIC	EXISTING OFE CEILING MIC (QTY 2)
EXISTING	AV RACK	EXISTING AV RACK
CHIEF	PAC526	AV SPECIALITY BACK BOX
CRESTRON	HD-TX-4KZ-101	HDBT TRANSMITTER
CRESTRON	HD-RX-4KZ-101	HDBT RECEIVER
ATLAS IED	TSO-BB44	4/4 I/O AUDIO DSP (INCLUDE POWER SUPPLY)

CONFERENCE ROOM 348

Function Summary		
Use Case	Local Presentation and Video Conferencing	
Display	Existing 65" display to be reused	
Input	HDMI input at table, wireless presentation	
Audio	Unified Communication Soundbar	
Control	Touch Control Panel on table	
Special	Soundbar to allow USB connection to bring your own device	
Equipment Summary		
Manufacturer	Model	Description
VERIFY	VERIFY	65" FLAT PANEL DISPLAY BY OWNER
CHIEF	LSTU	LOW PROFILE WALL MOUNT (VERIFY COMPATIBILITY)
POLYCOM	X50	UNIFIED CONFERENCING SOUNBAR
POLYCOM	TC8	TABLE TOP MOUNTED TOUCH CONTROL PANEL
ICRON	RANGER 2311	USB 2.0 EXTENDER
CRESTRON	HD-TX-4KZ-101	HDBT EXTENDER (TRANSMITTER)
CRESTRON	HD-RX-4KZ-101	HDBT EXTENDER (RECEIVER)
CHIEF	PAC526	AV SPECIALITY BACK BOX

CONTINGENCY

Contractor Shall be responsible for any costs associated with the replacement of any existing equipment damaged during the demo scope. For any equipment that is to be re-used, Contractor shall verify, in the presence of the owner, that existing equipment works prior to removal for safe keeping.

CONFERENCE ROOM 338

Function Summary		
Use Case	Local Presentation Only, No Video Conferencing	
Display	65" Flat Panel Display	
Input	HDMI Input at Wall plate	
Audio	Internal to Display	
Control	MFR provided remote control	
Special	N/A	
Equipment Summary		
Manufacturer	Model	Description
NEC	ME651	65" FLAT PANEL DISPLAY
CHIEF	LSTU	LOWPROFILE WALL MOUNT
LEGRAND	39878	HDMI PASS THROUGH WALL PLATE
CHIEF	PAC526	AV SPECIALITY BACK BOX

CAFE

Function Summary		
Use Case	Digital Signage	
Display	55" Flat Panel Display	
Input	Owner Provided Small Form Factor PC to run digital signage content	
Audio	Internal to Display only	
Control	MFR provided Remote Control	
Special	N/A	
Equipment Summary		
Manufacturer	Model	Description
NEC	MESS1	55" FLAT PANEL DISPLAY
CHIEF	LSTU	LOW PROFILE FLAT PANEL DISPLAY WALL MOUNT
BY OWNER	BY OWNER	SMALL FORM FACTOR DIGITAL SIGNAGE PLAYER
CHIEF	PAC526	AV SPECIALITY BACK BOX

OFFICE 302

Function Summary		
Use Case	Local HDMI presentation	
Display	55" Flat Panel Display	
Input	HDMI input at table	
Audio	Internal to Display only	
Control	MFR provided Remote Control	
Special	N/A	
Equipment Summary		
Manufacturer	Model	Description
BY OWNER	--	55" FLAT PANEL DISPLAY
CHIEF	LSTU	LOW PROFILE FLAT PANEL DISPLAY WALL MOUNT
CHIEF	PAC526	AV SPECIALITY BACK BOX
CRESTRON	HD-TX-4KZ-101	HDBT TRANSMITTER (MOUNTED UNDER TABLE)
CRESTRON	HD-RX-4KZ-101	HDBT RECEIVER (MOUNTED BEHIND DISPLAY)

OFFICE 370

Function Summary		
Use Case	Local HDMI presentation	
Display	55" Flat Panel Display	
Input	HDMI input at table	
Audio	Internal to Display only	
Control	MFR provided Remote Control	
Special	N/A	
Equipment Summary		
Manufacturer	Model	Description
NEC	ME551	55" FLAT PANEL DISPLAY
CHIEF	LSTU	LOW PROFILE FLAT PANEL DISPLAY WALL MOUNT
CHIEF	PAC526	AV SPECIALITY BACK BOX
CRESTRON	HD-TX-4KZ-101	HDBT TRANSMITTER (MOUNTED UNDER DESK)
CRESTRON	HD-RX-4KZ-101	HDBT RECEIVER (MOUNTED BEHIND DISPLAY)

NURSING RM 318

Function Summary		
Use Case	Casual Watching of TV Content	
Display	55" Display	
Input	Smart TV only	
Audio	Internal to Display	
Control	MFR provided remote	
Special	N/A	
Equipment Summary		
Manufacturer	Model	Description
SAMSUNG	QN55Q70CAFXZA	55" SMART TV DISPLAY
CHIEF	LSTU	LOW PROFILE FLAT PANEL DISPLAY WALL MOUNT
CHIEF	PAC526	AV SPECIALITY BACK BOX

PAGING SYSTEM

Paging Speakers are shown on the RCP for reference only. Design by others. Contractor shall refer to documentation by others for exact wiring requirements and other equipment requirements.

AFTER HOURS WORK

Contractor shall coordinate with owner IT team to determine what work will need to be done after hours on premium time in order to minimize any network downtime. Contractor shall provide any cost related to after hours work as part of the submittal proposal.

CABLING SCOPE & EQUIPMENT LISTS

CABLING REQUIREMENTS

1. Install cable in pathways
 - 1.1. No cabling to be exposed and accessible after installation
 - 1.2. Furniture feeds must be in conduit whip or mesh sleeve
 - 1.3. Visually exposed transition from one pathway to another must be routed in neat bundles tight to the structure.
2. UTP cable length shall be installed with no length exceeding 275-feet.
3. Arrange cable to maintain headroom and present a neat appearance.
4. Route cable, exposed or above accessible ceiling, parallel and perpendicular to walls and building structure.
5. Maintain adequate clearance, minimum of 12-inches, between ventilating ducts, piping, suspended ceilings, and high temperatures.
6. Provide Velcro straps on all cable bundles - zip-ties are not acceptable
7. Service Loops
 - a. Provide 180-inch service loop at all ceiling devices
 - b. Provide 24-inch service loop at all wall and floor devices
9. Observe proper clearances from power, equipment and lighting.
10. All fiber cabling shall be fusion spliced.

WIRELESS ACCESS POINTS

1. Wireless access points shall be provided by the owner and installed by the cabling installer.
2. Enclosures are NOT required for this project

CONNECTING CORDS AND ADAPTERS

1. All switch to patch panel patch cables shall be furnished and installed by the owner.
2. Owner Shall determine all colors and lengths of patch cables
3. The installer shall provide the following additional package for startup requirements:
 - Qty. 8 - 3m Fiber Patch Cords
 - Qty. 16 - 5-foot Voice Patch Cords
 - Qty. 10 - 5-foot Data Patch Cords
 - Qty. 12 - 15-foot Data Patch Cords
4. Owner shall provide all end point patch cables

TELECOMMUNICATIONS BONDING SYSTEM

1. Telecommunications equipment and raceways shall be properly grounded and bonded in accordance with TIA/EIA-607 and the NEC.
2. The telecommunications grounding and bonding system shall be tested with an "Earth Ground Resistance Tester, Amprobe GP-1" using the "Two-Point Test Method."

STRUCTURED CABLING EQUIPMENT LIST

Manufacturer	Part Number	Description
MDF/IDF/SERVER ROOM		
CPI	55053-703	2-Post Rack
Panduit	4SRU WMPV45E	NetRunner Vertical Cable Manager
Panduit	NMF2	2U Horizontal Cable Manager
Hubbell	HPJ48	48 Port Unloaded FLATPatch Panel
Corning	CCH-01U	1U Fiber Panel (IDF)
Corning	CCH-02U	2U Fiber Panel (MDF)
Corning	CCH-CS24-E4-P000E	12-Strand Fiber Cassette (FUSION SPLICE)
FIELD DEVICES		
Hubbell	IFP12	2-Port Keystone Face Plate (Verify Color)
Hubbell	IFP14	4-Port Keystone Face Plate (Verify Color)
Hubbell	ISB2	2-Port Keystone Surface Box
		Surface Mount Box
Hubbell	HXJ6	8P8C Connector - Color Coded Per Device
CABLING		
Hubbell	C6RP	Category 6 Cable (Plenum Rated) - Verify Color
Corning	COR-012T88-31190-A3	12 Strand OM4 Fiber Cable (ALTERNATE ONLY)
Corning	COR-024T88-31190-A3	24 Strand OM4 Fiber Cable (ALTERNATE ONLY)
Corning	COR-006E8P-31131-A3	6 Strand OS2 Fiber Cable (ALTERNATE ONLY)

GENERAL REQUIREMENTS

Contractor shall refer to specification section 270000 COMMUNICATION SYSTEMS for general project requirements. Contractor shall refer to 274100 AUDIOVISUAL SYSTEMS for AV specific notes.

SECURITY SYSTEM

Movement of the Access Control Panel is shown for reference only. Contractor shall coordinate with Owner's Security contractor to verify new placement location. All cabling routing of security cabling including, but not limited to, card readers, readers, etc shall be completed by the owner's security contractor.

CLOCK SYSTEM

Function Summary		
Use Case	Analog Wall Clock (POE) powered	
Display	N/A	
Input	N/A	
Audio	N/A	
Control	N/A	
Special	Clock receives timing information from an existing NTP server	
Equipment Summary		
Manufacturer	Model	Description
SAPLING	SAP-4BS-12R-0-XX	12" ROUND ANALOG CLOCK POE POWERED

CABLING SCOPE & EQUIPMENT LISTS

STRUCTURED CABLING SYMBOLS

	Data Location - Wall (X = Number of Drops, EX= Existing)
	Data Location - Above Counter (X = Number of Drops)
	Data Location - Floor (X = Number of Drops)
	Wireless Access Point
	Data Feed Point
	2-post rack
	4-post rack

AUDIOVISUAL SYMBOLS

	Flat Panel Display
	HDMI input plate
	Touch Panel Controller
	USB Connection
	Paging Ceiling Speaker (F= Flush Ceiling Mount P= Ceiling Pendant Mount) (By Others)
	Recessed Ceiling Speaker
	Ceiling Suspended Ceiling Microphone
	12" Walli mounted analog clock (Coordinate height with Arch Drawings)

Scope Delineation Matrix

RESPONSIBILITY:	GC / OTHER	AV	DATA CABLING	ELECTRICAL	FURNITURE	OWNERS IT TEAM
X - FURNISH & INSTALL						
F - FURNISH						
I - INSTALL						
V - VERIFY (UNKNOWN AT TIME OF ISSUANCE)						
Power, Back Boxes, & Conduit				X		
Telecommunications Bonding System				X		
Bonding of Telecommunications Racks & Devices			X			
Data Racks & Cabinets ¹			X			X
Cable Tray / Wire Management			X			
Data Cabling			X			
Data Cable Labeling, Testing & Certification			X			
Patch Cords at Device Locations and Rack Locations			X			X
Network & Phone Equipment						X
UPS						X
Firestopping			X			
Conference Room Table Boxes						X
Conference Room Table Inserts						X
AV Equipment			X			X
AV Cabling			X			
AV Cabling (CAT6 / UTP part of SCS)			X			

¹ - 2-post racks and associated cable management shall be provided by the contractor.

TECHNOLOGY SHEET LIST

Sheet Number	Sheet Name
T000	TECHNOLOGY COVER SHEET
T101	TECHNOLOGY FLOOR PLAN - 3RD FLOOR
T201	TECHNOLOGY FLOOR PLAN - 3RD FLOOR RCP
T300	TECHNOLOGY ENLARGED ROOM PLANS - NEW
T301	TECHNOLOGY AUDIO-VISUAL ELEVATIONS
T302	TECHNOLOGY - RISER DIAGRAM
T400	TECHNOLOGY DETAILS -CABLING DETAILS
T401	TECHNOLOGY AUDIOVISUAL SIGNAL FLOW
T402	TECHNOLOGY AUDIOVISUAL SIGNAL FLOW
TD101	TECHNOLOGY DEMOLITION PLAN - 3RD FLOOR
TD300	TECHNOLOGY ENLARGED ROOM PLANS - DEMO

REVISIONS:	
ISSUE	DATE
50% DESIGN DEVELOPMENT	02.01.2023
100% DESIGN DEVELOPMENT	04.10.2023
50% CONSTRUCTION DOCUMENTS	05.08.2023
BID SET	06.05.2023
CONSTRUCTION	08.11.2023

PROJECT:
SKOKIE PUBLIC LIBRARY 3rd FLOOR
5215 OAKTON STREET
SKOKIE, IL 60077

ARCHITECT:
ANDREW BERMAN ARCHITECT PLLC
77 CHAMBERS STREET
NEW YORK, NY 10007
P 212 226 5998

MEP ENGINEER:
SALAS O'BRIEN
815 SOUTH WABASH
AVENUE
CHICAGO, ILLINOIS 60605
P 312 786 4310
LIGHTING DESIGNER:
SCHULER SHOOK
363 WEST ERIE, SUITE 400
CHICAGO, ILLINOIS 60604
P 312 944 8230

ACOUSTICAL CONSULTANT:
THRESHOLD ACOUSTICS LLC
141 WEST JACKSON BLVD, SUITE
2080
CHICAGO, ILLINOIS 60604
P 312 386 1400

SHEET TITLE:
TECHNOLOGY COVER SHEET

SCALE:	DATE:
DRAWN: AG	CHECKED: JG
SEAL:	SHEET NO.:
	T000
	4

GENERAL NOTES:

CONTRACTOR TO REUSE EXISTING CONDUIT STUB UPS AND JUNCTION BOXES WHERE POSSIBLE. CONTRACTOR SHALL CONDUCT A SITE SURVEY TO DETERMINE WHICH CONDUIT STUB UPS AND JUNCTION BOXES CAN BE REUSED. CONTRACTOR SHALL FIELD VERIFY ALL EXISTING DATA LOCATIONS PRIOR TO BID. WHERE POSSIBLE CONTRACTOR SHALL REUSE EXISTING INFRASTRUCTURE INCLUDING BUT NOT LIMITED TO, CONDUIT STUB UPS, JBOXES, BACKBOXES, ETC. CONTRACTOR SHALL REMOVE EXISTING DATA CABLING WHILE MAINTAINING INFRASTRUCTURE AS DESCRIBED ABOVE AND PULL NEW DATA CABLING IN ALL LOCATIONS INCLUDING EXISTING LOCATIONS. AT LOCATIONS WHERE NEW DATA IS NEEDED, BUT EXISTING DATA INFRASTRUCTURE DOES NOT EXIST, CONTRACTOR SHALL PULL NEW DATA ALONG WITH ALL NECESSARY INFRASTRUCTURE, BUT NOT LIMITED TO, JBOXES, CONDUIT STUB UPS, BACK BOXES AND FACEPLATES.

TECHNOLOGY SHEET NOTES:

- 01

SURFACE MOUNT JACK COORDINATE WITH ARCHITECT AND CASEWORK
- 02

EXISTING 90° DISPLAY TO REMAIN. CONTRACTOR SHALL REMOVE AND KEEP SAFE DURING DEMOLITION. CONTRACTOR SHALL REINSTALL AND CENTER ON CONFERENCE ROOM TABLE WITH NEW MOUNTING. COORDINATE FINAL LOCATION WITH ARCHITECT PRIOR TO INSTALLATION
- 03

EXISTING AV RACK TO BE RELOCATED
- 04

EXISTING 65° DISPLAY TO REMAIN. CONTRACTOR SHALL REMOVE AND KEEP SAFE DURING DEMOLITION. CONTRACTOR SHALL REINSTALL DISPLAY WITH NEW MOUNTING. COORDINATE FINAL LOCATION WITH ARCHITECT PRIOR TO INSTALLATION
- 05

2 4 INCH CONDUIT PATHWAYS, REFER TO NOTE 06 FOR CABLE PATHWAY REQUIREMENTS
- 06

ALL CABLING PLAN SOUTH OF DEFINED LINE SHALL TERMINATE IN MDF VIA DEFINED PATHWAYS
- 07

ALL CABLING PLAN NORTH OF DEFINED LINE SHALL TERMINATE IN MDF VIA DEFINED PATHWAYS. CONTRACTOR SHALL FURNISH AND INSTALL CONDUIT SLEEVES AS REQUIRED
- 08

(1) 2 INCH CONDUIT PATHWAYS, REFER TO NOTE 06 FOR CABLE PATHWAY REQUIREMENTS
- 09

EXISTING DATA CONNECTION TO BE USED AS WALL FEED

TERMINATE TO SOUTH SIDE 2-POST RACK
TERMINATE TO NORTH SIDE 2-POST RACK

1 TECHNOLOGY FLOOR PLAN - 3RD FLOOR

1/8" = 1'-0"

REVISIONS:	
ISSUE	DATE
50% DESIGN DEVELOPMENT	02.01.2023
100% DESIGN DEVELOPMENT	04.10.2023
50% CONSTRUCTION DOCUMENTS	05.06.2023
BID SET	06.05.2023
CONSTRUCTION	08.11.2023
ISSUE FOR FFE BID	10.19.2023
PROJECT:	
SKOKIE PUBLIC LIBRARY 3rd FLOOR	
5215 OAKTON STREET SKOKIE, IL 60077	
ARCHITECT:	
ANDREW BERMAN ARCHITECT PLLC	
77 CHAMBERS STREET NEW YORK, NY 10007 P 212 226 5998	
MEP ENGINEER:	
SALAS O'BRIEN	
815 SOUTH WABASH AVENUE CHICAGO, ILLINOIS 60605 P 312 786 4310	
LIGHTING DESIGNER:	
SCHULER SHOOK	
363 WEST ERIE, SUITE 400 CHICAGO, ILLINOIS 60604 P 312 944 8230	
ACOUSTICAL CONSULTANT:	
THRESHOLD ACOUSTICS LLC	
141 WEST JACKSON BLVD, SUITE 2080 CHICAGO, ILLINOIS 60604 P 312 396 1400	
SHEET TITLE:	
TECHNOLOGY FLOOR PLAN - 3RD FLOOR	
SCALE:	DATE:
DRAWN: AG	CHECKED: JG
SEAL:	SHEET NO.:
	T101
	of 4